



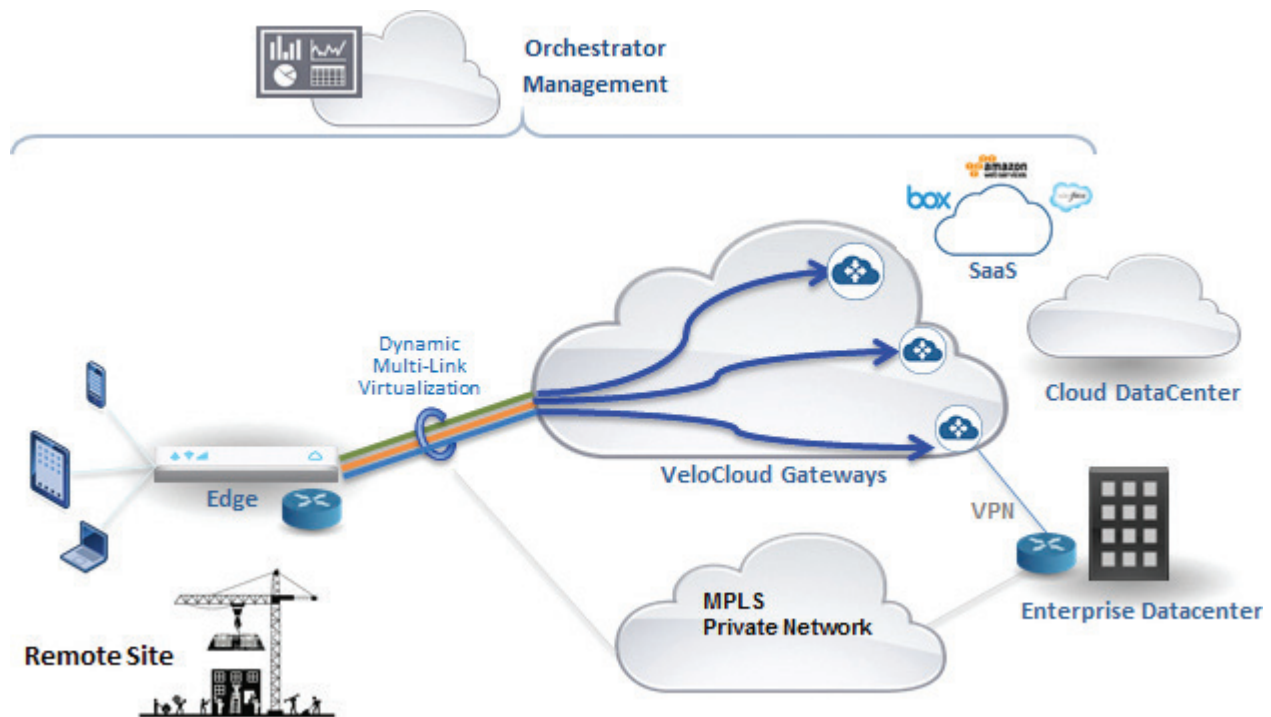
CLOUD-DELIVERED WAN TO EASILY CONNECT ALL THE REMOTE SITES

VeloCloud delivers Zero-touch, Enterprise-grade WAN to rapidly connect remote sites for Architecture, Engineering and Construction (AEC)

VeloCloud modernizes AEC Enterprise Networks with a Cloud-Delivered WAN that dynamically steers business critical applications over the best available path for reliable access:

- > Simplifies WAN for pop-up construction sites and remote offices by moving the network to the cloud for easy install and teardown
- > Enables multiple, inexpensive broadband links including 4G/LTE to behave like a secure and high-bandwidth WAN link for reliable access to Building Information Modeling systems and rich media files.
- > Centralized management and policy-based enforcement enables faster deployment and ease of management of remote sites from mergers, acquisitions and spinoffs
- > Cost Effective with pay-as-you-go subscription model for flexible IT budget management

VELOCLOUD NETWORK-AS-A-SERVICE



VeloCloud Network-as-a-Service provides a complete Cloud-Delivered WAN solution that includes Cloud Networking, Virtualized services and ordinary broadband links transformed to behave like an Enterprise-grade Internet.

For a simple and subscription-based cloud-delivered WAN solution, contact us today: www.velocloud.com/eval | (650) 209-4180.

COMPLETE WAN SOLUTION FOR ARCHITECTURE, ENGINEERING AND CONSTRUCTION

SIMPLIFY WAN DEPLOYMENT WITH CLOUD

- Deploy new, temporary or pop-up branches in minutes with zero IT touch branch Edge with cloud activation and management.
- Automatic selection of cloud gateways for best direct path eliminates backhauling of WAN traffic for SaaS applications like Office365, Building Information Modeling and other cloud applications.
- Unified architecture to scale from one pop-up site to 1000s of remote offices seamlessly. Full interoperability with other WAN vendors for remote branches from your acquisitions and mergers.
- Subscription based Network-as-a-Service eliminates upfront CAPEX costs.

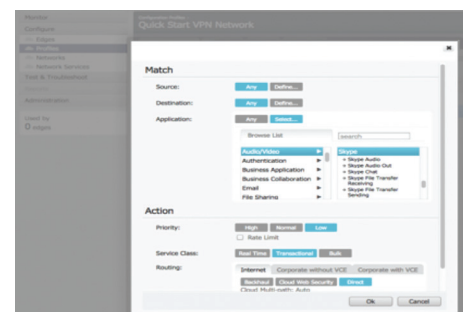


AGGREGATE BROADBAND, LTE LINKS FOR REMOTE SITES

- Aggregate multiple inexpensive broadband links including LTE-4G/3G and leased lines into a virtual, high bandwidth WAN to support critical applications, design and media data files access and collaboration like voice/video and virtual desktops.
- Enterprise-grade WAN with dynamic multi-path steering and on-demand link remediation for redundancy and performance protection.
- Smart QoS with application-aware classification for 2200+ applications for granular control based on custom business objectives.
- Enterprise wide monitoring and group policy setting for all sites, ISPs, applications and users.

CENTRALIZED MANAGEMENT, CONTROL AND POLICY ENFORCEMENT

- Stateful and context aware firewall (application, user, device) for advanced security.
- Automatic, single click site-to-site VPN for branch-to-headquarters and direct branch-to-branch traffic. Monitor real-time status and health from the cloud console.
- Business policies based on application priorities, usage, and security goals.
- Easy Plug-and-Play device installation and teardown at remote sites based on the job requirement.



“VeloCloud enables us to deploy remote site offices rapidly with automated use of one or more LTE services for the capacity and reliability needed.”

— SHAWN PARTRIDGE, VICE PRESIDENT OF IT, ROCKFORD CONSTRUCTION

ABOUT VELOCLOUD

VeloCloud, a cloud networking services Company, simplifies branch networking by transforming ordinary broadband links into the fast, resilient and secure connections needed by today’s distributed enterprises. VeloCloud is the first to provide all three elements needed to achieve a cloud-delivered WAN: cloud networking, virtualized services and enterprise-grade Internet. VeloCloud has its headquarters in Los Altos, Calif., with a development center in Chennai, India. For more information, visit www.velocloud.com.



295 N. Bernardo Ave, Ste. 200 > Mountain View, CA 94043 > +1.650.209.4180 > contact@velocloud.com > www.velocloud.com